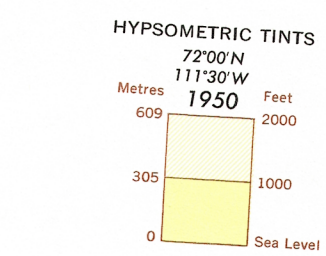


VICTORIA ISLAND EAST
ELEVATIONS IN FEET

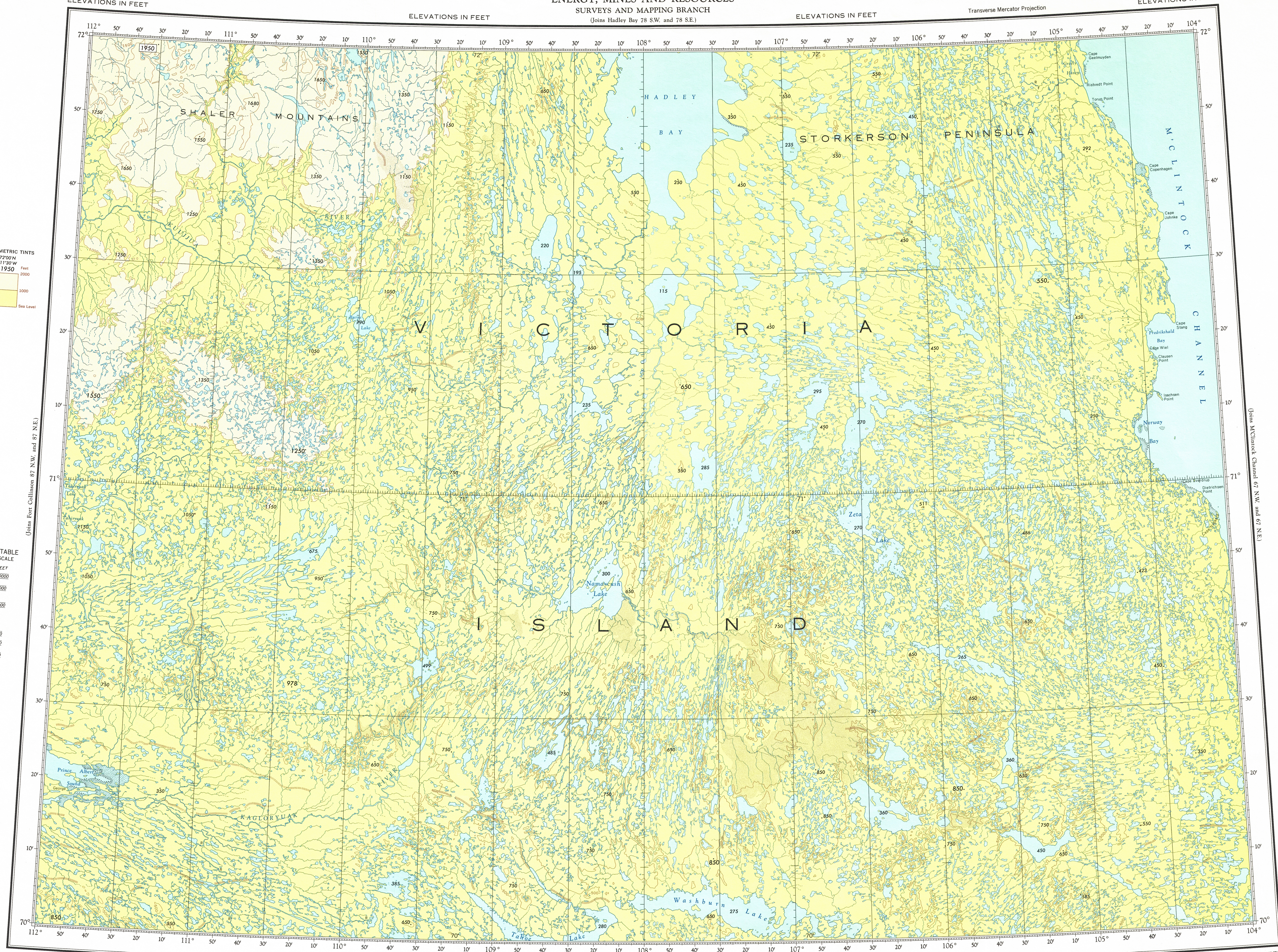
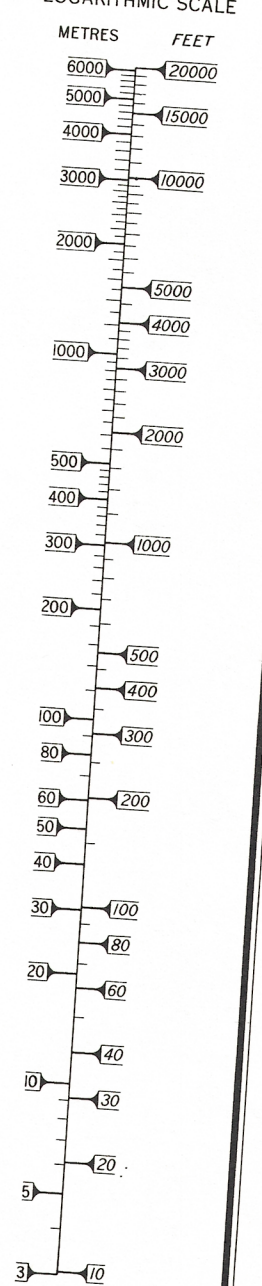
CANADA
DEPARTMENT OF
ENERGY, MINES AND RESOURCES
SURVEYS AND MAPPING BRANCH
(Joins Hadley Bay 78 S.W. and 78 S.E.)

Transverse Mercator Projection

ELEVATIONS IN FEET



CONVERSION TABLE
LOGARITHMIC SCALE



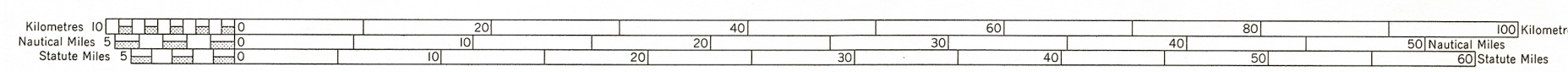
ELEVATIONS IN FEET
Base Map, 6A Edition 1968

Produced by the Survey and Mapping Branch,
Department of Energy, Mines and Resources.

ELEVATIONS IN FEET

(Joins Cambridge Bay 77 S.W. and 77 S.E.)

ELEVATIONS IN FEET



SCALE 1:500,000

Copies may be obtained from the Map Distribution Office,
Department of Energy, Mines and Resources, Ottawa.

ELEVATIONS IN FEET
VICTORIA ISLAND EAST
N.T.S. No. 77 N.W. and 77 N.E.