

HAY LAKE ELEVATIONS IN FEET

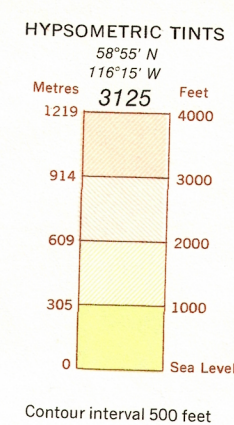
CANADA DEPARTMENT OF ENERGY, MINES AND RESOURCES SURVEYS AND MAPPING BRANCH

(Joins Providence 85 S.W.)

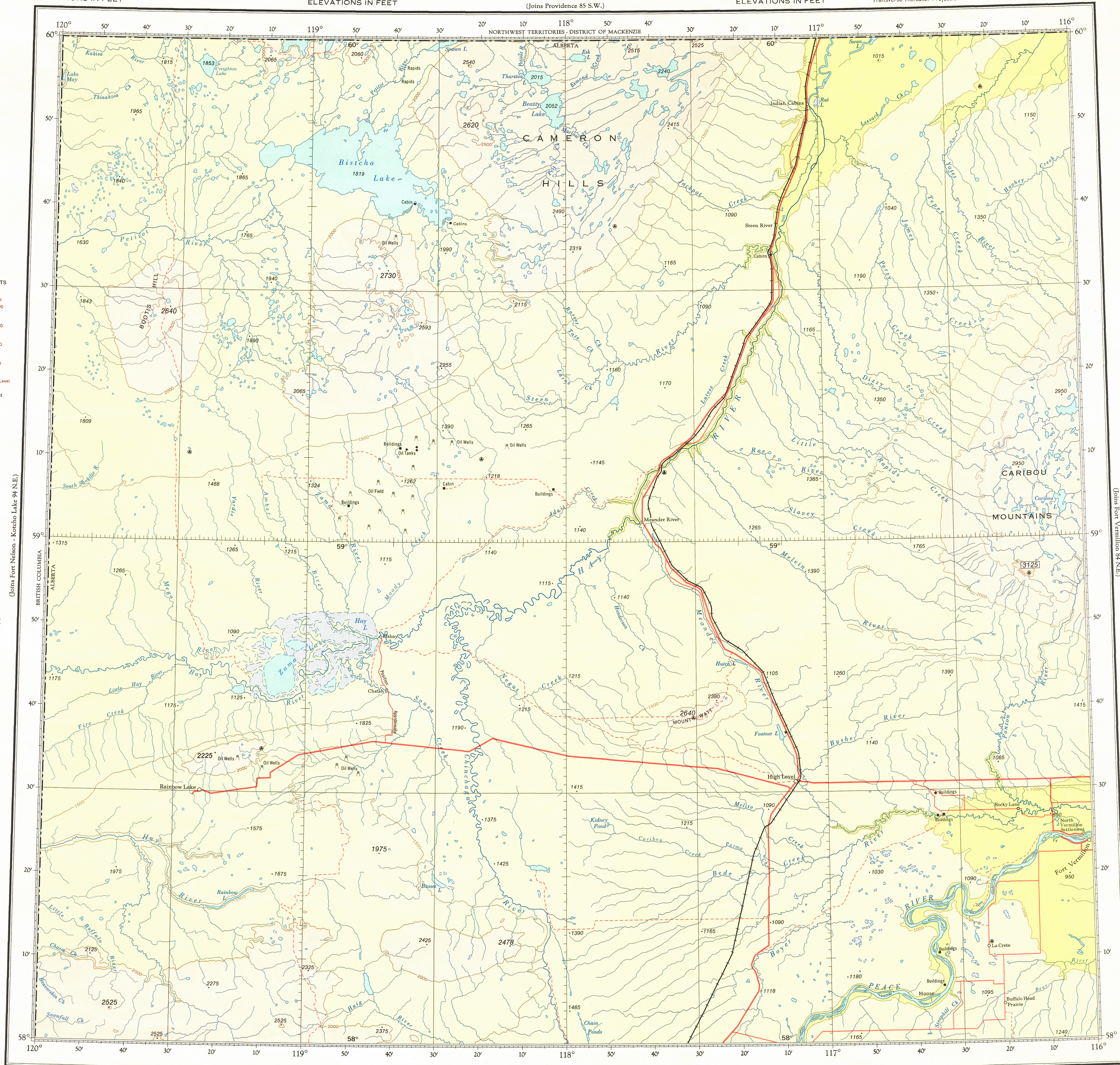
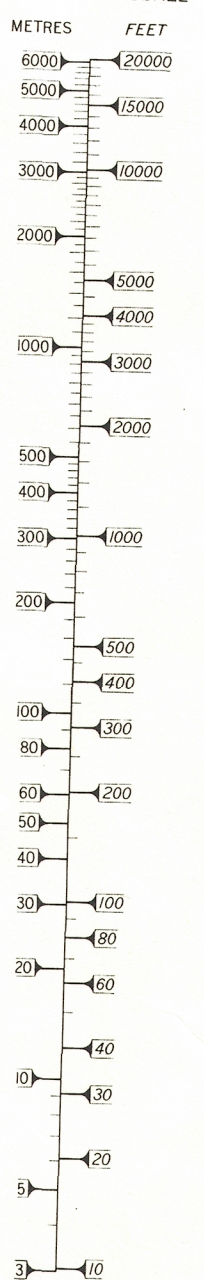
ELEVATIONS IN FEET

Transverse Mercator Projection

ELEVATIONS IN FEET



CONVERSION TABLE LOGARITHMIC SCALE



ELEVATIONS IN FEET
Base Map, 5th Edition 1973

Produced by the Surveys and Mapping Branch,
Department of Energy, Mines and Resources.
© Canada Copyrights Reserved 1974

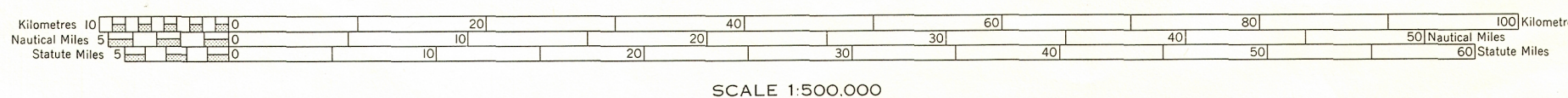
ELEVATIONS IN FEET

(Joins Peace River 84 S.W.)

ELEVATIONS IN FEET

ELEVATIONS IN FEET

HAY LAKE
N.T.S. No. 84 N.W.



Copies may be obtained from the Canada Map Office,
Department of Energy, Mines and Resources, Ottawa,
or your nearest map dealer.