

PEACE RIVER
ELEVATIONS IN FEET

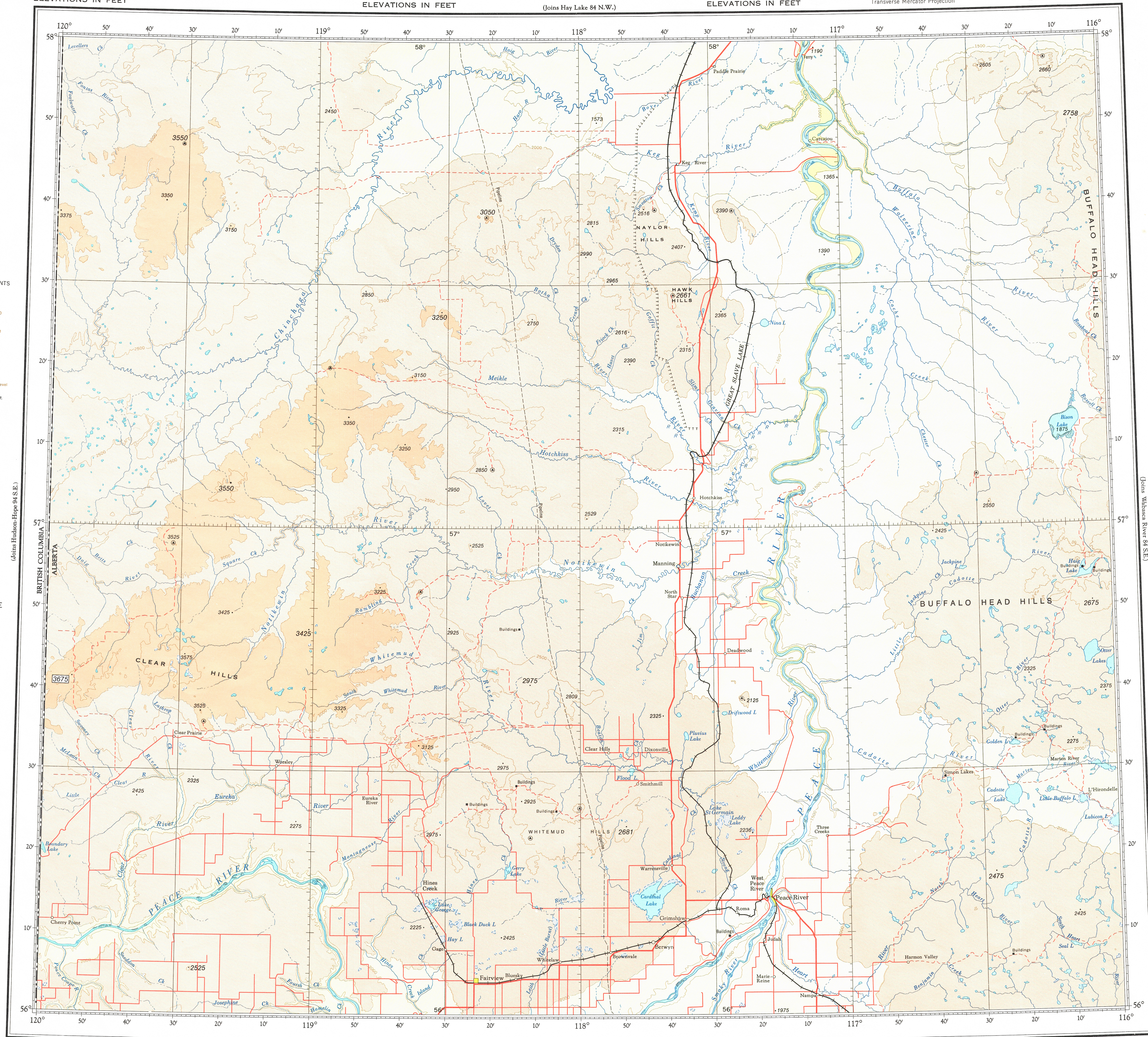
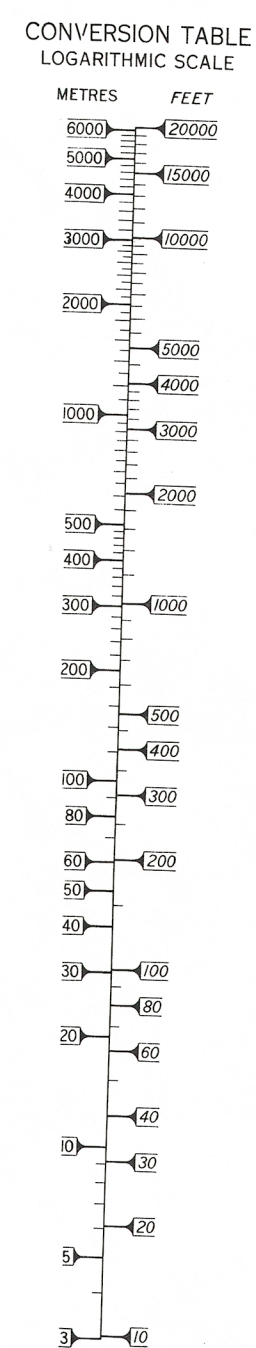
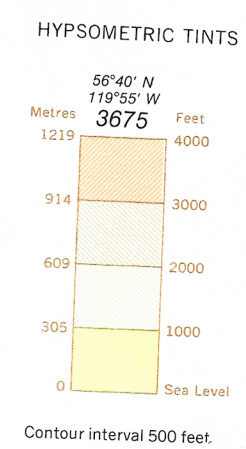
CANADA
DEPARTMENT OF
ENERGY, MINES AND RESOURCES
SURVEYS AND MAPPING BRANCH

(Joins Hay Lake 84 N.W.)

ELEVATIONS IN FEET

Transverse Mercator Projection

ELEVATIONS IN FEET



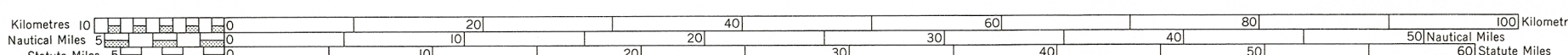
ELEVATIONS IN FEET
Base Map, 7th Edition 1977

Produced by the Surveys and Mapping Branch,
Department of Energy, Mines and Resources.
© Canada Copyrights Reserved 1977

ELEVATIONS IN FEET

(Joins Grande Prairie 83 N.W.)

ELEVATIONS IN FEET



SCALE 1:500,000

Copies may be obtained from the Canada Map Office,
Department of Energy, Mines and Resources, Ottawa,
or your nearest map dealer.

ELEVATIONS IN FEET
PEACE RIVER
N.T.S. No. 84 S.W.