

CANADA
DEPARTMENT OF
ENERGY, MINES AND RESOURCES
SURVEYS AND MAPPING BRANCH
(Joins Colville Lake 96 N.W. and 96 N.E.)

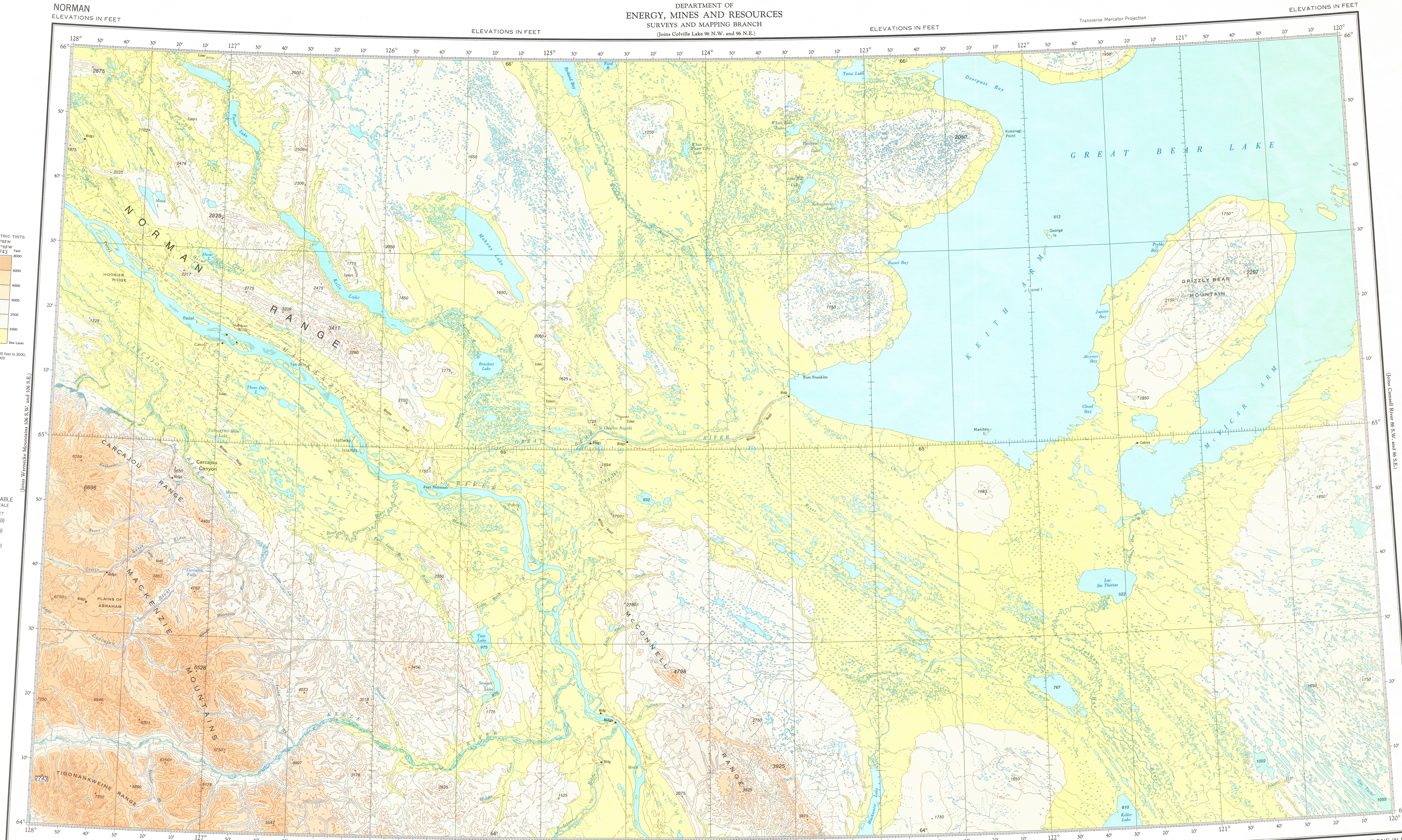
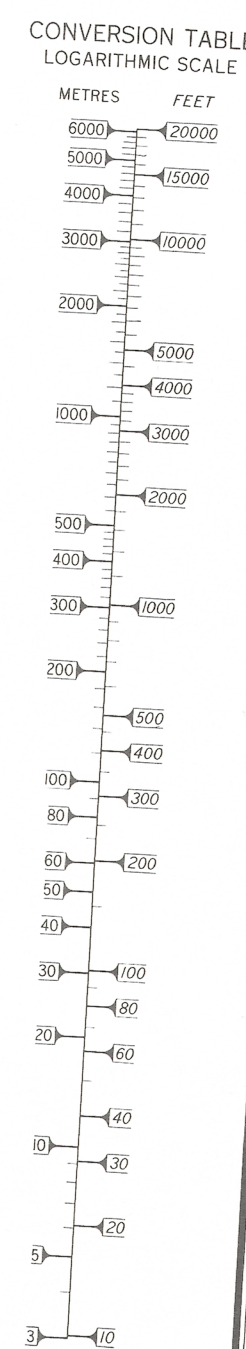
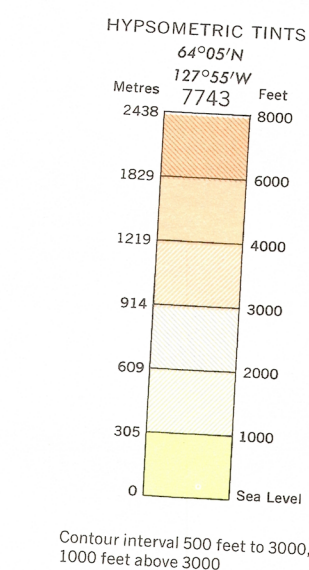
NORMAN
ELEVATIONS IN FEET

ELEVATIONS IN FEET

ELEVATIONS IN FEET

ELEVATIONS IN FEET

Transverse Mercator Projection



ELEVATIONS IN FEET
Base Map, 6th Edition 1977

Produced by the Surveys and Mapping Branch,
Department of Energy, Mines and Resources.
© Canada Copyright Reserved 1977

ELEVATIONS IN FEET

(Joins Wrigley 95 N.W. and 95 N.E.)

ELEVATIONS IN FEET



SCALE 1:500,000

Copies may be obtained from Canada Map Office,
Department of Energy, Mines and Resources, Ottawa,
or your nearest map dealer.

ELEVATIONS IN FEET
NORMAN
N.T.S. No. 96 S.W. and 96 S.E.

This document was produced
by scanning the original publication.

Ce document est le produit d'une
numérisation par balayage
de la publication originale.