

JUNEAU - ATLIN
ELEVATIONS IN FEET

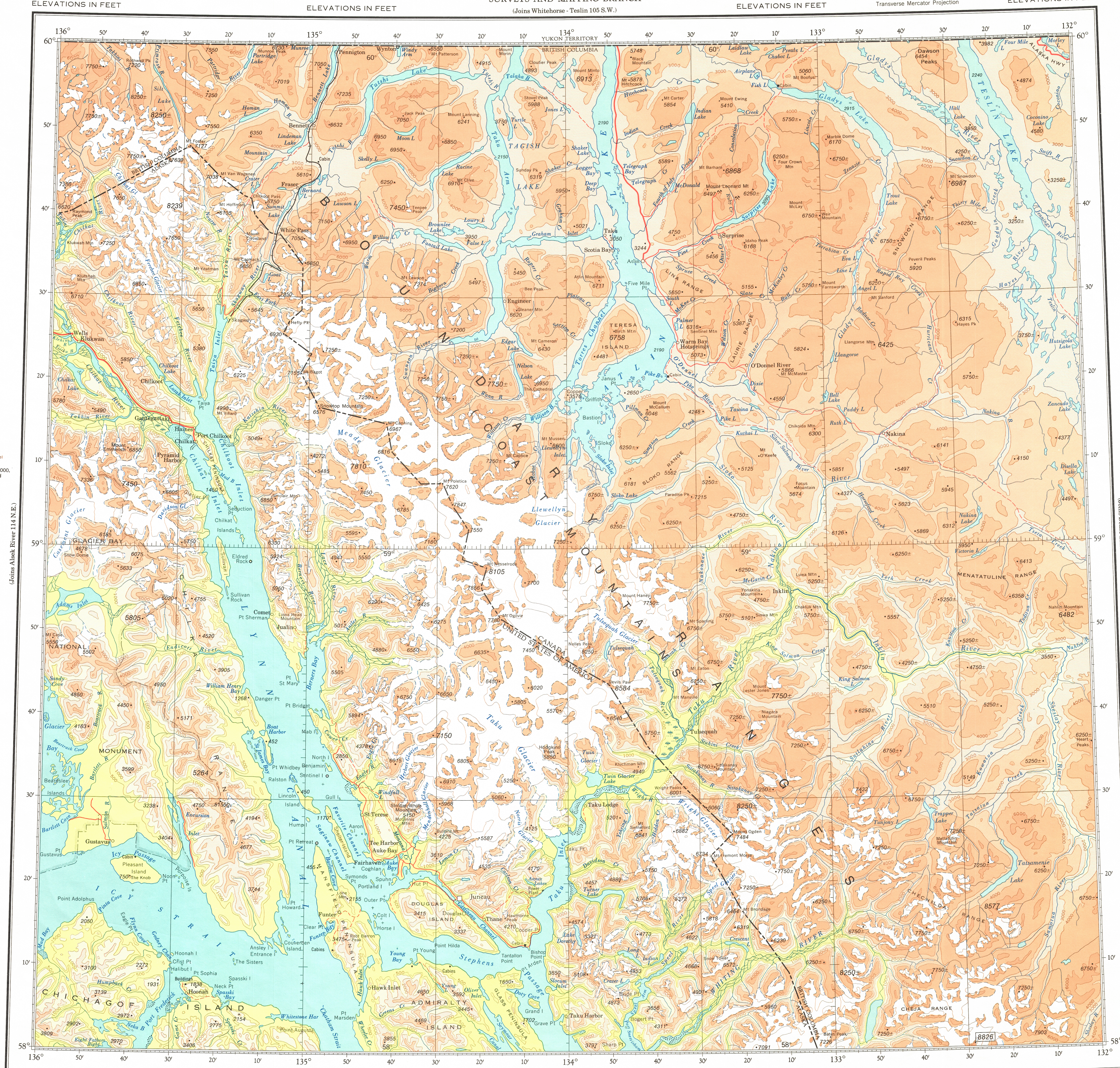
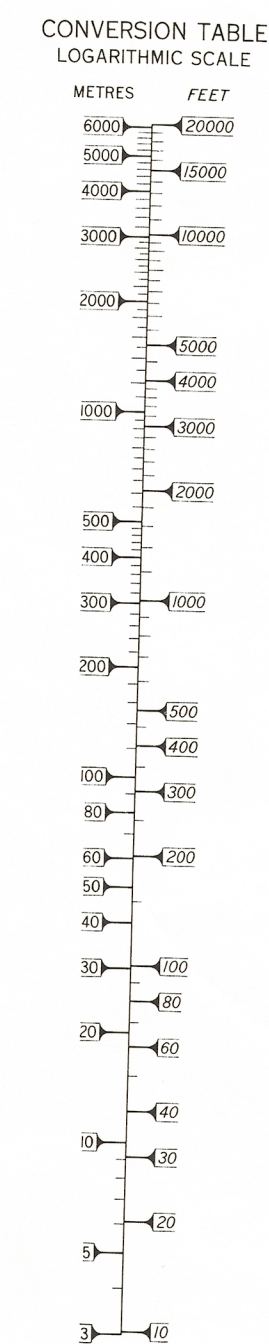
ELEVATIONS IN FEET

ELEVATIONS IN FEET

ELEVATIONS IN FEET

Transverse Mercator Projection

ELEVATIONS IN FEET



ELEVATIONS IN FEET

Produced by the Surveys and Mapping Branch
Department of Energy, Mines and Resources.

© 1978. Her Majesty the Queen in Right of Canada.
Department of Energy, Mines and Resources.

ELEVATIONS IN FEET

(Joins Stikine River 104 S.E. from 133° East)

ELEVATIONS IN FEET

ELEVATIONS IN FEET

LINEAL-ATL IN

JUNEAU - ATLANTA
JUN 15 - 1943 AM 11:11

N.T.S. No. 104 N.W.
Base Map, 6th Edition 1978

SCALE 1:500 000

Kilometres 10 20 40 60 80 100 Kilometre

Nautical Miles 0 10 20 30 40 50 Nautical Miles

Statute Miles 0 10 20 30 40 50 60 Statute Miles

Copies may be obtained from the Canada Map Office,
Department of Energy, Mines and Resources, Ottawa
or your nearest map dealer.

This document was produced
by scanning the original publication.

Ce document est le produit d'une
numérisation par balayage
de la publication originale.