

- Dual Highway, hard surface
Route à 2 chaussées séparées, revêtement dur
- Road, hard surface, more than 2 lanes, highway route number
Route, revêtement dur, plus de 2 voies, numéros de route
- Road, hard surface, 2 lanes
Route, revêtement dur, 2 voies
- Road, hard surface, less than 2 lanes
Route, revêtement dur, moins de 2 voies
- Road, loose or stabilized surface, all season, 2 lanes or more
Route de gravier/stabilisée, toute saison, 2 voies ou plus
- Road, loose or stabilized surface, all season, less than 2 lanes
Route de gravier/stabilisée, toute saison, moins de 2 voies
- Road, loose surface, dry weather
Route de gravier, temps secs
- Vehicle track or wheel track, gate
Chemin de terre ou d'hiver: barrière
- Trail, cut line or portage, portage, short
Sentier: pont ou portage, portage, court
- Built-up area, street, park/park field
Agglomération: rue; parc ou terrain de sports
- Railway, single track, multiple tracks, side track, station
Chemin de fer: voie unique, voies multiples, voie d'évitement, gare
- Power transmission line, multiple lines
Ligne électrique, lignes multiples
- Bridge, footbridge, tunnel
Pont: piétonnier, tunnel
- Cut, embankment, causeway
Déblai; remblai; chaussée
- Canal, open, lock, navigation light
Hydrobus; héliport; balise lumineuse
- Building(s)
Bâtiment(s)
- Church, non-Christian place of worship, shrine
Église: lieu de culte non chrétien, sanctuaire, lieu de pèlerinage
- School, elevator, fire station
École; ascenseur; caserne de pompiers
- Commercial historic site, place of interest, greenhouse
Commercia; lieu historique ou lieu d'intérêt; serre
- Compost, picnic site, service centre
Compost; site de pique-nique; centre de service
- Golf course, ski area, mine
Terrain de golf; station de ski; mine
- Oil or natural gas facility, electrical facility
Installation pétrolière ou de gaz naturel; installation électrique
- International boundary with minimum
Frontière internationale avec: minimum
- Boundary, first class
Limite de première classe
- Boundary, first class unapproved
Limite de première classe non approuvée
- Boundary, second class
Limite de deuxième classe
- Boundary, second class in Dominion Land Survey
Limite de deuxième classe dans les règlements des terres du Canada
- Boundary, third class
Limite de troisième classe
- Boundary, fourth class
Limite de quatrième classe
- Boundary, fifth class
Limite de cinquième classe
- Boundary, sixth class
Limite de sixième classe
- Boundary, sixth class unapproved
Limite de sixième classe non approuvée
- Boundary, seventh class
Limite de septième classe
- Boundary, eighth class
Limite de huitième classe
- Boundary, ninth class
Limite de neuvième classe
- Dam, small, large, carrying road
Barrage: petit, grand, portant une route
- Watercourse, perennial, intermittent, ephemeral
Cours d'eau ou ruisseau: pérenne, intermittent, éphémère
- Rapids, falls (with height in black)
Rapid; chute (hauteur: hauteur en noir)
- Lake or pond, slough, intermittent lake or pond
Lac; étang; lac intermittent; lac ou étang intermittent
- Forcible flow or sand in water
Forçage; fluide ou sable dans l'eau
- Rocks in water or small islands
Roches dans l'eau ou îlots
- Rocky ledge, rocky reef
Banc rocheux; récif
- Marsh, swamp
Marais; marécage
- Contours, major, intermediate, approximate
Courbes de niveau: majeures, intermédiaires, approximatives
- Depression contours
Courbes de creux
- Cut or escarpment
Falaise ou escarpement
- Sand, silt, silt, silt
Sable; silt; silt
- Silt, silt, silt
Silt; silt; silt
- Wooded area, orchard, vineyard, hopfield
Bosage boisé; verger; vignoble; houblonnière
- Region, forest, swamp, tundra, bog, bog
Région: forêt; marais; tourbière; marais

For complete reference, see reverse side.
Pour une liste complète des signes, voir au verso.

Your Local Dealer Votre vendeur local

73 A/13	73 A/14	73 A/15
73 A/12	73 A/11	73 A/10
73 A/5	73 A/6	73 A/7

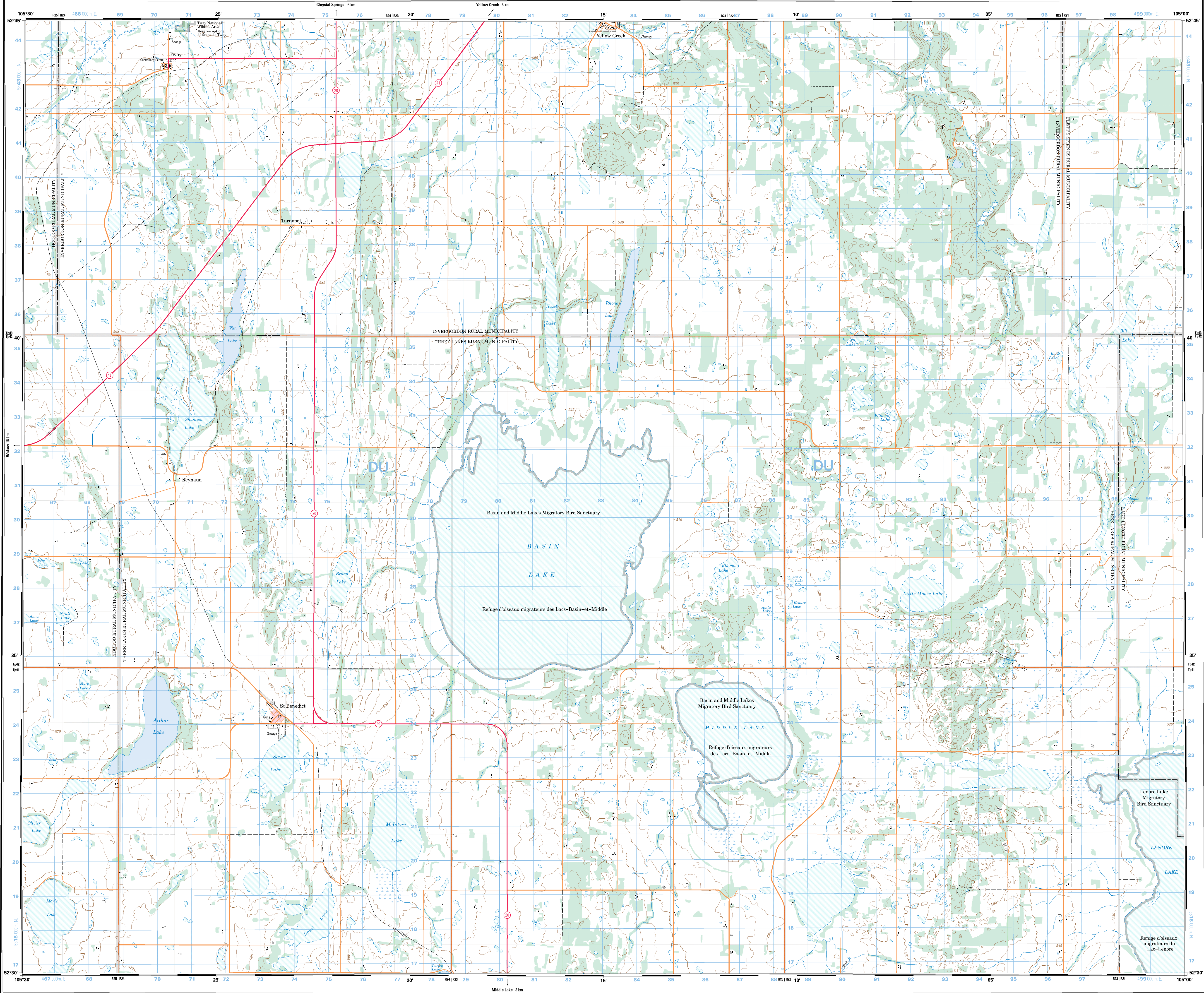
Natural Resources Canada Ressources naturelles Canada

CANADIAN TOPOGRAPHIC MAPS
CARTES TOPOGRAPHIQUES DU CANADA

73 A/11 1/50 000

BASIN LAKE

BASIN LAKE 73 A/11 Edition 3 Édition Canada



Produced by the Centre for Topographic Information, Natural Resources Canada. Toponyms current as of 2001; all other information current as of 1991. Published in 2002.

Visit our Web site: <http://maps.NRCan.gc.ca/>

For corrections, additions or comments concerning the content of this map, please contact us either by telephone at 1-800-465-6277, by facsimile at 1-800-861-6277 or by electronic mail at: topo.maps@NRCan.gc.ca

This map may not be reproduced in whole or in part, by any means-graphic, electronic or mechanical-without the written permission of Natural Resources Canada.

© 2002. Her Majesty the Queen in Right of Canada.

This map is not to be used for air or marine navigation.

Transverse Mercator Projection • Projection transverse de Mercator

North American Datum 1983
Système de référence nord-américain de 1983

Coordinates conversion: NAD 83 (WGS 84) to NAD 27
Coordonnées géographiques: Latitude + soustraire 0.1°
Longitude + soustraire 1.9°
Grid: Northing + soustraire 221 m
Easting + soustraire 36 m

Conversion des coordonnées NAD 83 (WGS 84) à NAD 27
Latitude + soustraire 0.1°
Longitude + soustraire 1.9°
Quadrillage: Abscisse (E) + soustraire 36 m

BASIN LAKE
SASKATCHEWAN
West of Second Meridian • Ouest du deuxième méridien

1/50 000

Miles 1 0 1 2 3 4 Miles
Kilomètres 1 0 1 2 3 4 Kilomètres

1 centimetre on the map represents 500 metres on the ground
1 centimètre sur la carte représente 500 mètres au sol

Contour Interval: 10 Metres
Équidistance des courbes: 10 mètres

Elevations in Metres above Mean Sea Level
Altitudes en mètres au-dessus du niveau moyen de la mer

Method used to give reference to the nearest 100 metres
Méthode employée pour fixer des repères à 100 mètres près

1000 metre
Universal Transverse Mercator Grid
Zone 13
Quadrillage universel transverse de Mercator de 1000 mètres

100 000 metre Square
Identification du carré de 100 000 mètres

DU
Grid Zone Designation
13 U
Designation de la zone du quadrillage

Established by the Centre of Topographic Information, Natural Resources Canada. Toponyms as of 2001; all other information as of 1991. Published in 2002.

Visit our Web site: <http://maps.NRCan.gc.ca/>

For corrections, additions or comments concerning the content of this map, please contact us either by telephone at 1-800-465-6277, by facsimile at 1-800-861-6277 or by electronic mail at: topo.maps@NRCan.gc.ca

This map may not be reproduced in whole or in part, by any means-graphic, electronic or mechanical-without the written permission of Natural Resources Canada.

© 2002. Her Majesty the Queen in Right of Canada.

This map is not to be used for air or marine navigation.

Established by the Centre of Topographic Information, Natural Resources Canada. Toponyms as of 2001; all other information as of 1991. Published in 2002.

Visit our Web site: <http://maps.NRCan.gc.ca/>

For corrections, additions or comments concerning the content of this map, please contact us either by telephone at 1-800-465-6277, by facsimile at 1-800-861-6277 or by electronic mail at: topo.maps@NRCan.gc.ca

This map may not be reproduced in whole or in part, by any means-graphic, electronic or mechanical-without the written permission of Natural Resources Canada.

© 2002. Her Majesty the Queen in Right of Canada.

This map is not to be used for air or marine navigation.