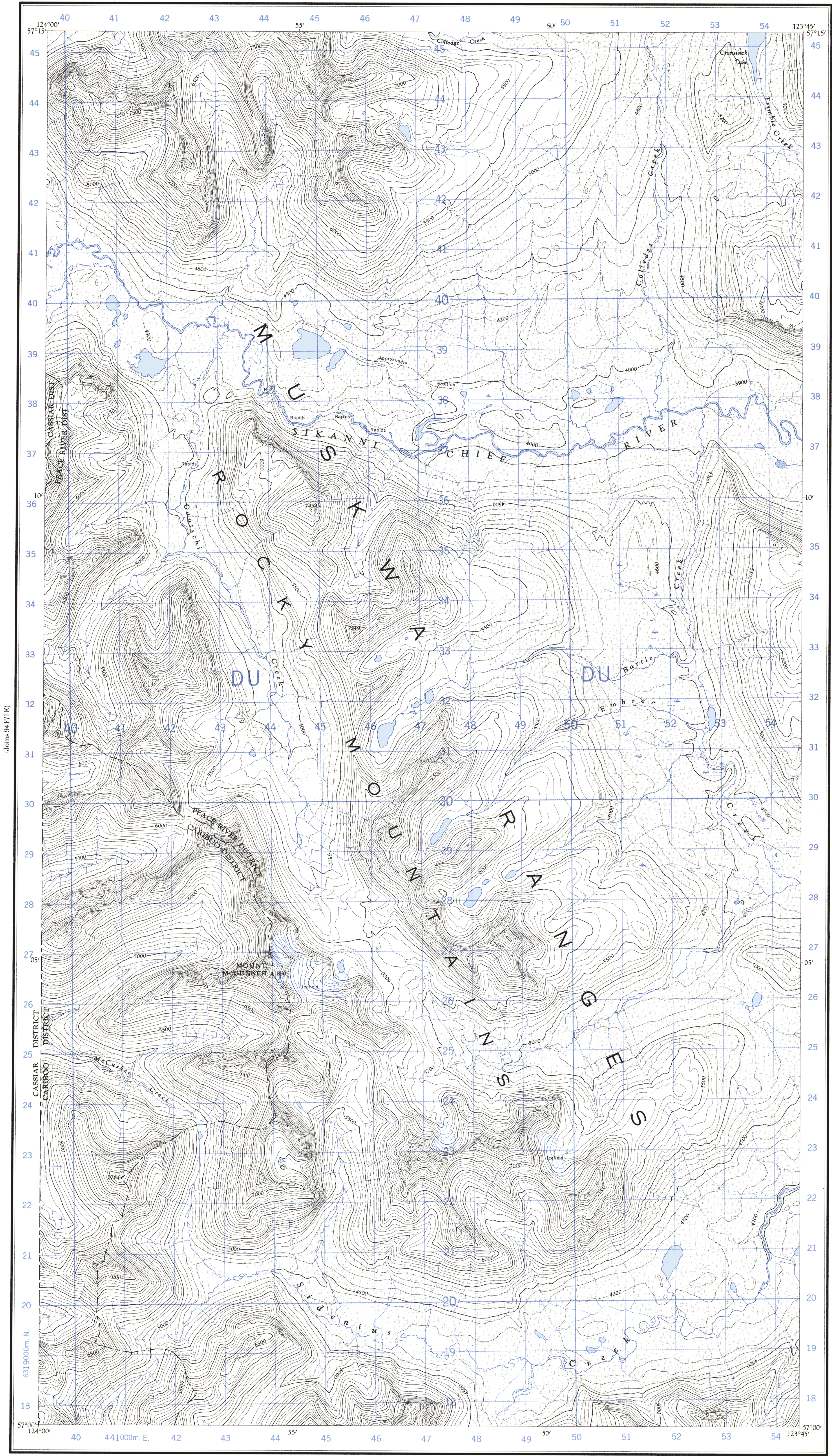


Refer to this map as:	94 G/4 W EDITION 1 ASE SERIES A 721
--------------------------	---



Compiled, 1963, by the SURVEYS AND MAPPING BRANCH,  
DEPARTMENT OF MINES AND TECHNICAL SURVEYS,  
from aerial photographs taken in 1958 and 1960. Field surveys 1958.  
Printed 1966.

Copies may be obtained from the Map Distribution Office,  
Department of Mines and Technical Surveys, Ottawa.

(Joins Mount Robb 94B/13 W)

## MOUNT McCUSKER

### BRITISH COLUMBIA

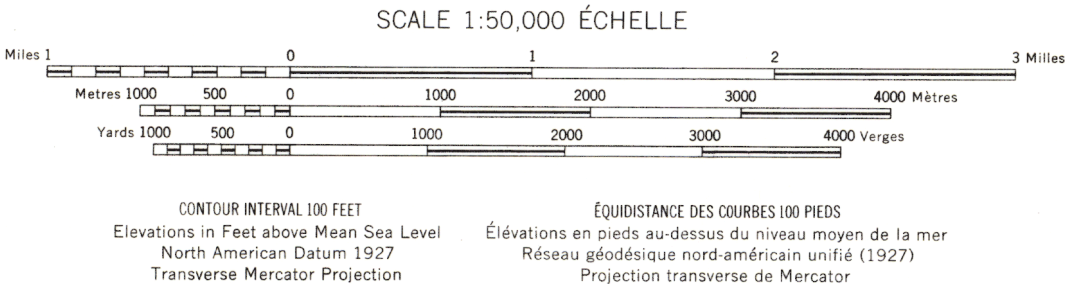
Rédigée en 1963, par la DIRECTION DES LEVÉS ET DE LA CARTOGRAPHIE,  
MINISTÈRE DES MINES ET DES RELEVÉS TECHNIQUES, d'après des photo-  
graphes aériennes prises en 1958 et 1960. Levés sur le terrain en 1958. Imprimée en 1966.

Ces cartes sont en vente au Bureau de distribution des cartes,  
ministère des Mines et des Relevés techniques, Ottawa.

Roads: all-weather, dry weather, cart track, trail or portage, Railway, normal gauge, single track, Power transmission line, Mine or Open cut, Horizontal control point, with elevation, Bench mark, with elevation.

Routes: toute saison, période sèche, de terre, sentier ou portage, Chemin de fer, voie unique (écartement normal), Ligne de transport d'énergie, Mine ou fosse à ciel ouvert, Point géodésique avec cote, Repaire de nivellement avec cote.

BM 157



Building, School, Church, Light house, River with bridge, Stream, Lake intermittent, indefinite, Marsh or Swamp, Depression contours.

Bâtiment, École, Église, Phare, Cours d'eau intermittent ou à sec, Lac intermittent, rive improprisée, Marais ou marécage, Courbes de cuvette.

Barn, Grange, Post Office, Cemetery.

Bureau de poste, Cimetière.

CONVERSION SCALE FOR ELEVATIONS



Use diagram only to obtain numerical values,  
APPROXIMATE MEAN DECLINATION 1965  
FOR CENTRE OF MAP  
Annual change decreasing 3.9'

GRID ZONE DESIGNATION	100,000 M. SQUARE IDENTIFICATION
10V	DU

TO GIVE A REFERENCE TO NEAREST 100 METRES	
EXAMPLE: STREAM JUNCTION	
EASTING: Read number on grid line immediately to left of point. Estimate tenths of a square from this line eastward to point.	47 6 476
NORTHING: Read number on grid line immediately below point. Estimate tenths of a square from this line northward to point.	32 4 324
MILITARY GRID REFERENCE	476324
Nearest similar grid reference 100,000 metres (about 6.3 miles)	

ONE THOUSAND METRE  
UNIVERSAL TRANSVERSE MERCATOR GRID  
ZONE 10

INSPECTION OF THIS MAP USING 1985 SATELLITE IMAGERY  
REVEALED NO CHANGES IN MAJOR HYDROGRAPHIC OR CON-  
STRUCTED FEATURES.

UNE VÉRIFICATION DE CETTE CARTE AU MOYEN D'IMAGES  
SATELLITE DE 1985 N'A MONTRÉ AUCUN CHANGEMENT EN CE QUI  
CONCERNE LES ÉLÉMENTS HYDROGRAPHIQUES OU LES  
ÉLÉMENTS RAPPORTÉS (CONSTRUCTIONS) D'IMPORTANCE.