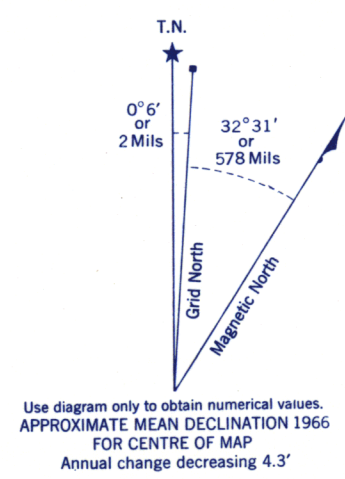
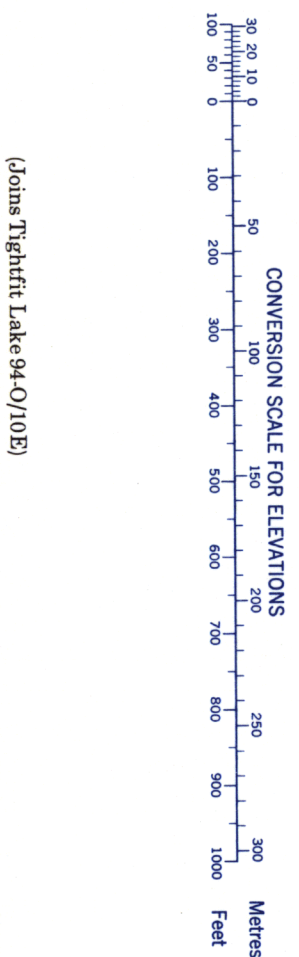
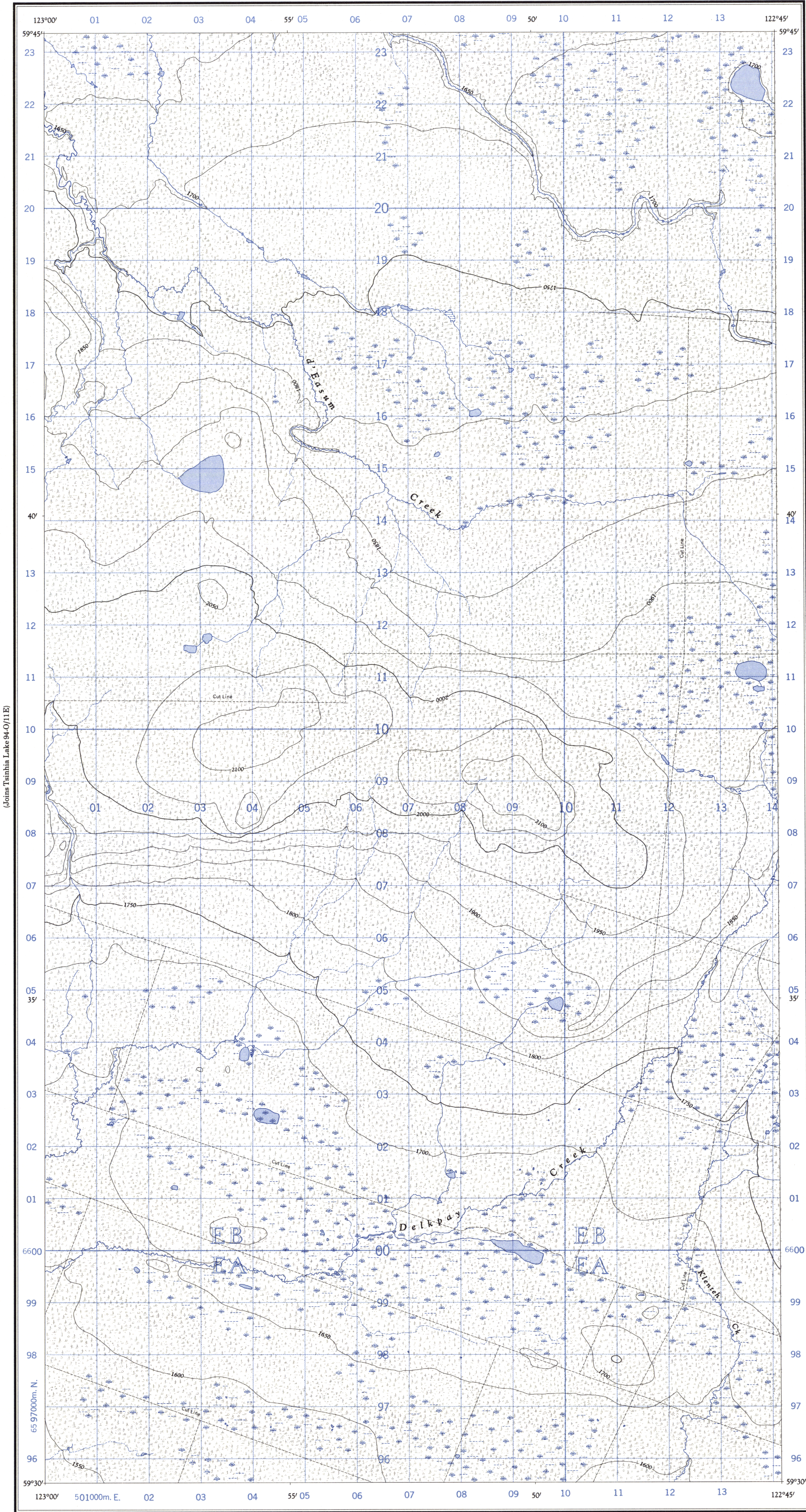


Refer to
this map as:

94 O/10 W
EDITION 1 ASE
SERIES A 721



GRID ZONE DESIGNATION	100,000 M. SQUARE IDENTIFICATION
10 V	<div>EB EA</div>
TO GIVE A REFERENCE TO NEAREST 100 METRES	
EXAMPLE: TRAIL JUNCTION	
EASTING: Read number on grid line immediately to left of point. Estimate tenths of a square from this line eastward to point.	03 0
NORTHING: Read number on grid line immediately below point. Estimate tenths of a square from this line northward to point.	96 7
MILITARY GRID REFERENCE	030967
Nearest similar grid reference 100,000 metres (about 63 miles)	

ONE THOUSAND METRE
UNIVERSAL TRANSVERSE MERCATOR GRID
ZONE 10

Compiled, 1964, by the SURVEYS AND MAPPING BRANCH,
DEPARTMENT OF MINES AND TECHNICAL SURVEYS,
from aerial photographs taken in 1957. Field surveys 1960. Printed 1966.

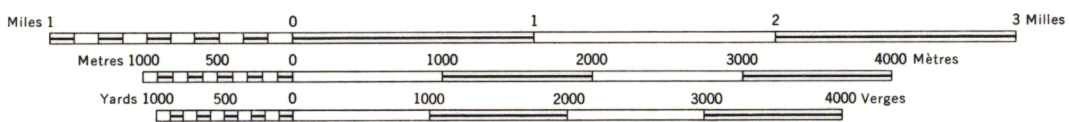
Copies may be obtained from the Map Distribution Office,
Department of Mines and Technical Surveys, Ottawa.

(Joins Kiwigana River 94-O/7 W)

TIGHTFIT LAKE

PEACE RIVER DISTRICT
BRITISH COLUMBIA

SCALE 1:50,000 ÉCHELLE



Rédigé en 1964, par la DIRECTION DES LEVÉS ET DE LA CARTOGRAPHIE,
MINISTÈRE DES MINES ET DES RELEVÉS TECHNIQUES, d'après des photo-
graphies aériennes prises en 1957. Levés sur le terrain en 1960. Imprimée en 1966.

Ces cartes sont en vente au Bureau de distribution des cartes,
ministère des Mines et des Relevés techniques, Ottawa.

Building	Ébâtiment	Barn	Grange
School	École	Post Office	Bureau de poste
Church	Église	Cemetery	Cimetière
Lighthouse	Phare		
River with bridge	Rivière avec pont		
Stream, intermittent or dry	Cours d'eau intermittent ou à sec		
Lake intermittent, indefinite	Lac intermittent; rive imprécise		
Marsh or Swamp	Marais ou marécage		
Depression contours	Courbes de cuvette		