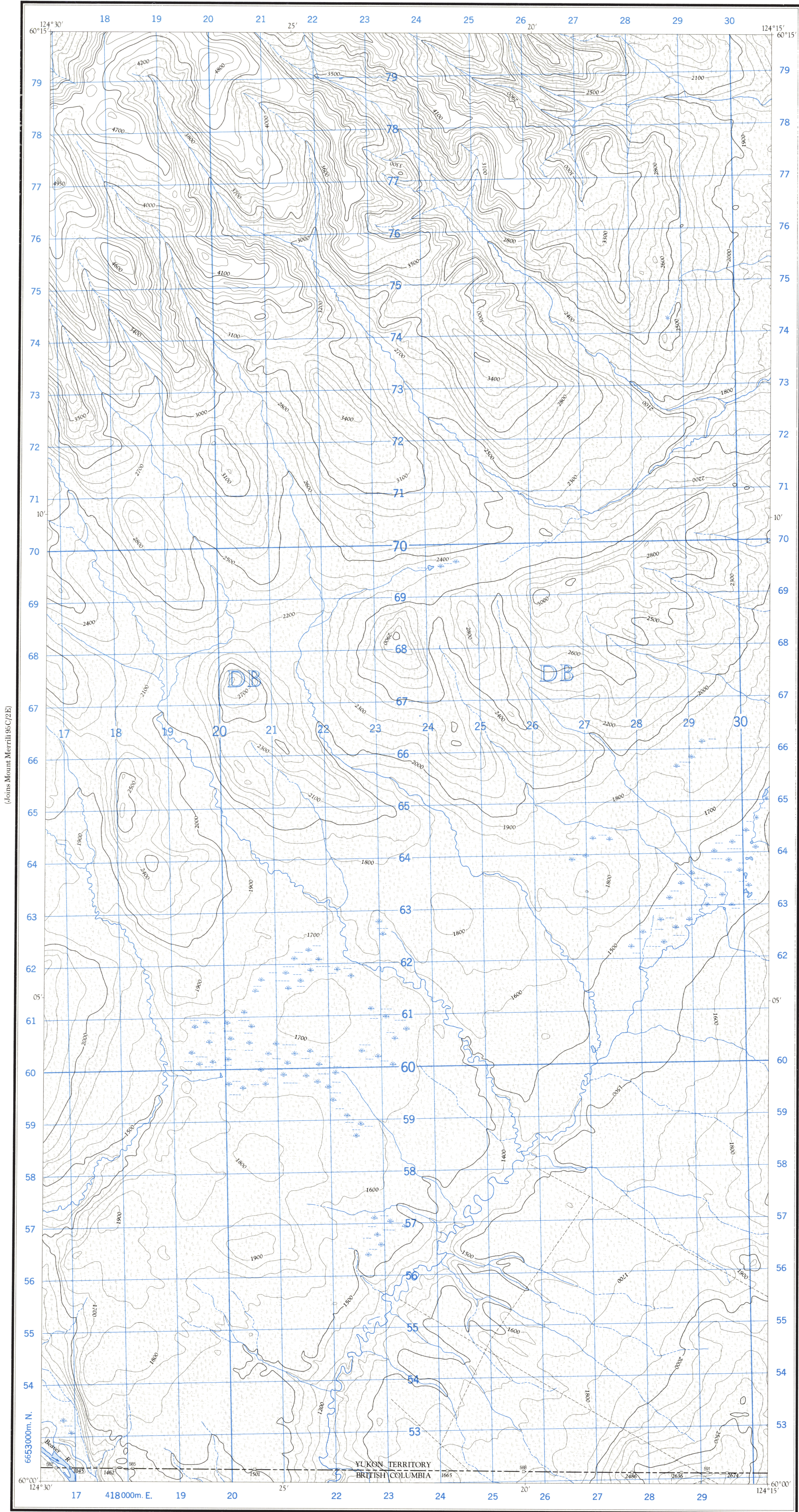


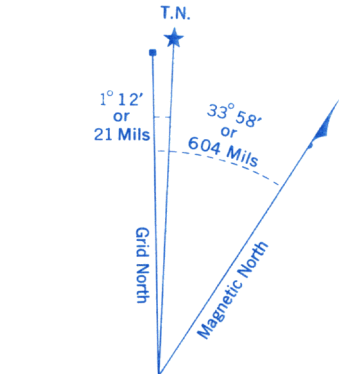
Refer to
this map as:

95 C/1 W
EDITION 1 ASE
SERIES A 722



(Joins Mount Merrill 95C/2E)

(Joins Mount Martin 95C/1E)



Use diagram only to obtain numerical values.
APPROXIMATE MEAN DECLINATION 1965
FOR CENTRE OF MAP
Annual change decreasing 4.1'

GRID ZONE DESIGNATION	100,000 M. SQUARE IDENTIFICATION
10 V	DB

TO GIVE A REFERENCE TO NEAREST 100 METRES	
EXAMPLE: STREAM JUNCTION	
EASTING: Read number on grid line immediately to left of point	25
Estimate tenths of a square from this line eastward to point.	5 255
NORTHING: Read number on grid line immediately below point	58
Estimate tenths of a square from this line northward to point.	6 586
MILITARY GRID REFERENCE	255586
Nearest similar grid reference (100,000 metres about 63 miles)	

ONE THOUSAND METRE
UNIVERSAL TRANSVERSE MERCATOR GRID
ZONE 10

Compiled, 1963, by the SURVEYS AND MAPPING BRANCH,
DEPARTMENT OF MINES AND TECHNICAL SURVEYS,
from aerial photographs taken in 1961. Field surveys 1960. Printed 1966.

Copies may be obtained from the Map Distribution Office,
Department of Mines and Technical Surveys, Ottawa.

(Joins 94N/16W)

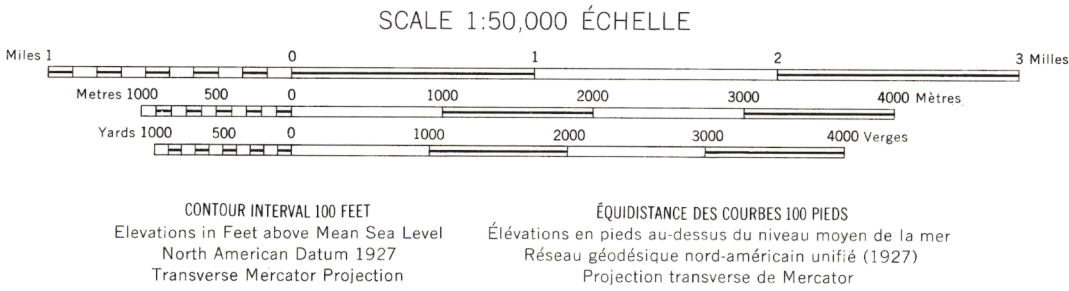
MOUNT MARTIN

YUKON TERRITORY - BRITISH COLUMBIA - NORTHWEST TERRITORIES

Rédigée en 1963, par la DIRECTION DES LEVÉS ET DE LA CARTOGRAPHIE,
MINISTÈRE DES MINES ET DES RELEVÉS TECHNIQUES, d'après des photo-
graphies aériennes prises en 1961. Levés sur le terrain en 1960. Imprimée en 1966.

Ces cartes sont en vente au Bureau de distribution des cartes,
ministère des Mines et des Relevés techniques, Ottawa.

Roads:	Routes:
all weather.....	toute saison.....
dry weather.....	période sèche.....
cart track.....	de terre.....
trail or portage.....	sentier ou portage.....
Railway, normal gauge, single track.....	Chemin de fer, voie unique (écartement normal).....
Power transmission line.....	Ligne de transport d'énergie.....
Mine or Open cut.....	Mine ou fosse à ciel ouvert.....
Horizontal control point, with elevation.....	Point géodésique avec cote..... 454
Bench mark, with elevation.....	Repère de nivellement avec cote..... BM 157



Building.....	Bâtiment.....	Barn.....	Grange.....
School.....	École.....	Post Office.....	Bureau de poste.....
Church.....	Eglise.....	Cemetery.....	Cimetière.....
Lighthouse.....	Phare.....		
River with bridge.....	Rivière avec pont.....		
Stream, intermittent or dry.....	Cours d'eau intermittent ou à sec.....		
Lake intermittent, river impounded.....	Lac intermittent, rive impédonée.....		
Marsh or Swamp.....	Marais ou marécage.....		
Depression contours.....	Courbes de cuvette.....		