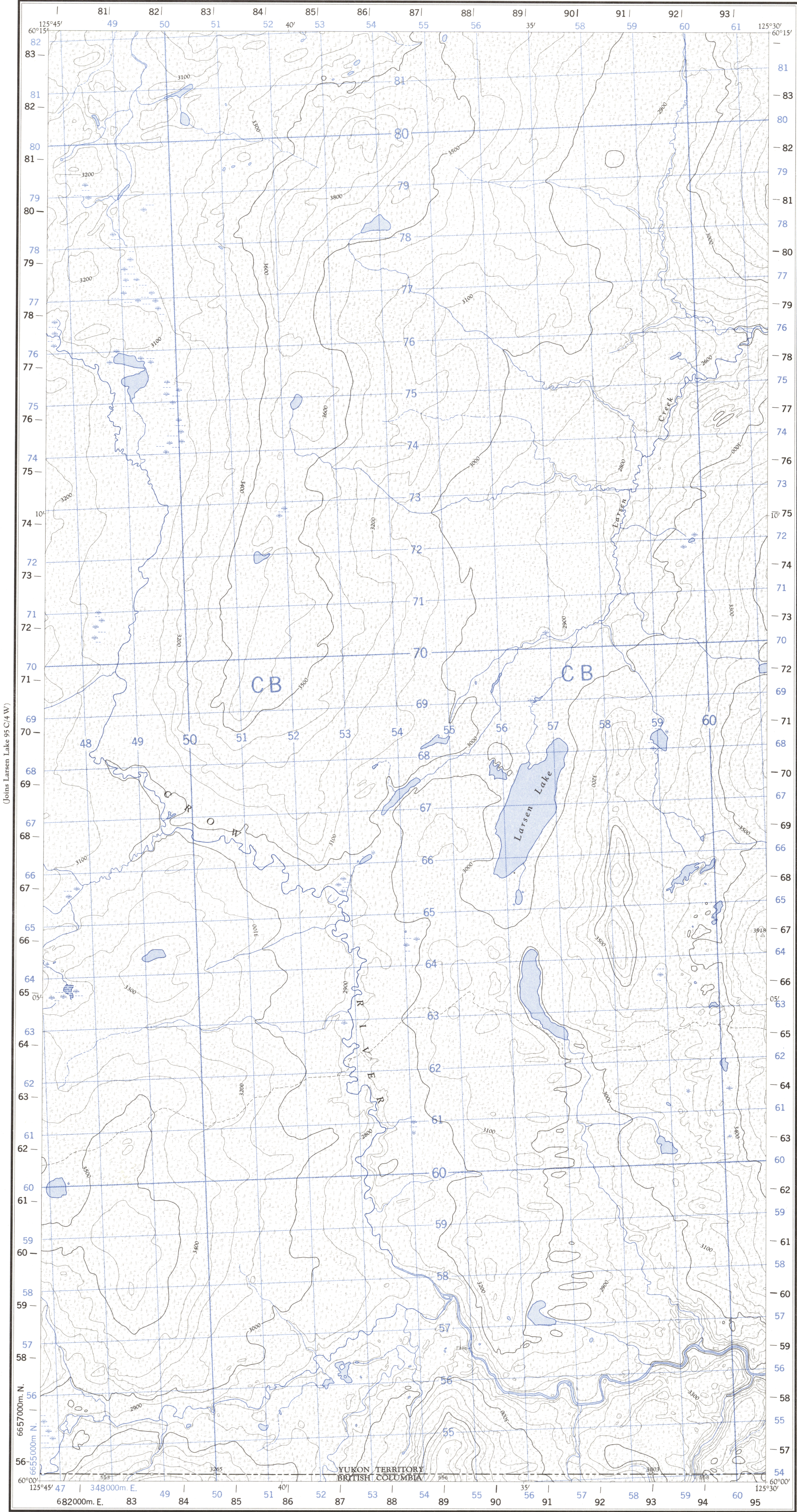
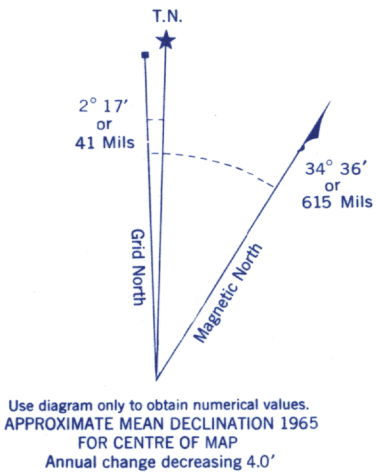


| | |
|--------------------------|---|
| Refer to this map as: | 95 C/4 E EDITION 1 ASE SERIES A 722 |
|--------------------------|---|



(Joins Mooney Creek 95 C/3 W)



| GRID ZONE DESIGNATION | 100,000 M. SQUARE IDENTIFICATION |
|---|----------------------------------|
| 10V | CB |
| TO GIVE A REFERENCE TO NEAREST 100 METRES | |
| EXAMPLE: TRAIL JUNCTION | |
| EASTING: Read number on grid line immediately to left of point Estimate tenths of a square from this line eastward to point. | 52 9 529 |
| NORTHING: Read number on grid line immediately below point Estimate tenths of a square from this line northward to point. | 62 3 623 |
| MILITARY GRID REFERENCE | 529623 |
| Nearest similar grid reference 100,000 metres (about 63 miles) | |

ONE THOUSAND METRE
UNIVERSAL TRANSVERSE MERCATOR GRID
ZONE 10

BLACK NUMBERED TICKS INDICATE
THE 1000 METRE U.T.M. GRID
ZONE 9

Compiled, 1963, by the SURVEYS AND MAPPING BRANCH,
DEPARTMENT OF MINES AND TECHNICAL SURVEYS,
from aerial photographs taken in 1960. Field surveys 1960. Printed
1966.

Copies may be obtained from the Map Distribution Office,
Department of Mines and Technical Surveys, Ottawa.

LARSEN LAKE

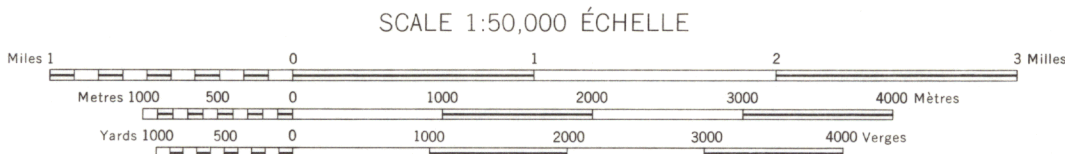
YUKON TERRITORY - BRITISH COLUMBIA

(Joins 94 N/13 E)

Rédigée en 1963, par la DIRECTION DES LEVÉS ET DE LA
CARTOGRAPHIE, MINISTÈRE DES MINES ET DES RE-
LEVÉS TECHNIQUES, d'après des photographies aériennes
prises en 1960. Levés sur le terrain en 1960. Imprimée en 1966.

Ces cartes sont en vente au Bureau de distribution des cartes,
ministère des Mines et des Relevés techniques, Ottawa.

| Roads: | Routes: |
|---|---|
| all weather..... | toute saison..... |
| dry weather..... | période sèche..... |
| cart track..... | de terre..... |
| trail or portage..... | sentier ou portage..... |
| Railway, normal gauge, single track..... | Chemin de fer, voie unique (écartement normal)..... |
| Power transmission line..... | Ligne de transport d'énergie..... |
| Mine or Open cut..... | Mine ou fosse à ciel ouvert..... |
| Horizontal control point, with elevation..... | Point géodésique avec cote..... |
| Bench mark, with elevation..... | Repère de nivellement avec cote..... |



CONTOUR INTERVAL 100 FEET
Elevations in Feet above Mean Sea Level
North American Datum 1927
Transverse Mercator Projection

ÉQUIDISTANCE DES COURBES 100 PIEDS
Élévations en pieds, au-dessus du niveau moyen de la mer
Réseau géodésique nord-américain unifié (1927)
Projection transverse de Mercator

| | | | |
|------------------------------------|--|------------------|----------------------|
| Building..... | Bâtiment..... | Barn..... | Grange..... |
| School..... | École..... | Post Office..... | Bureau de poste..... |
| Church..... | Eglise..... | Cemetery..... | Cimetière..... |
| Lighthouse..... | Phare..... | | |
| River with bridge..... | Rivière avec pont..... | | |
| Stream, intermittent or dry..... | Cours d'eau intermittent ou à sec..... | | |
| Lake intermittent, indefinite..... | Lac intermittent, rive imprécise..... | | |
| Marsh or Swamp..... | Marais ou marécage..... | | |
| Depression contours..... | Courbes de cuvette..... | | |

PROVISIONAL PRINT
IMPRESSION PROVISOIRE