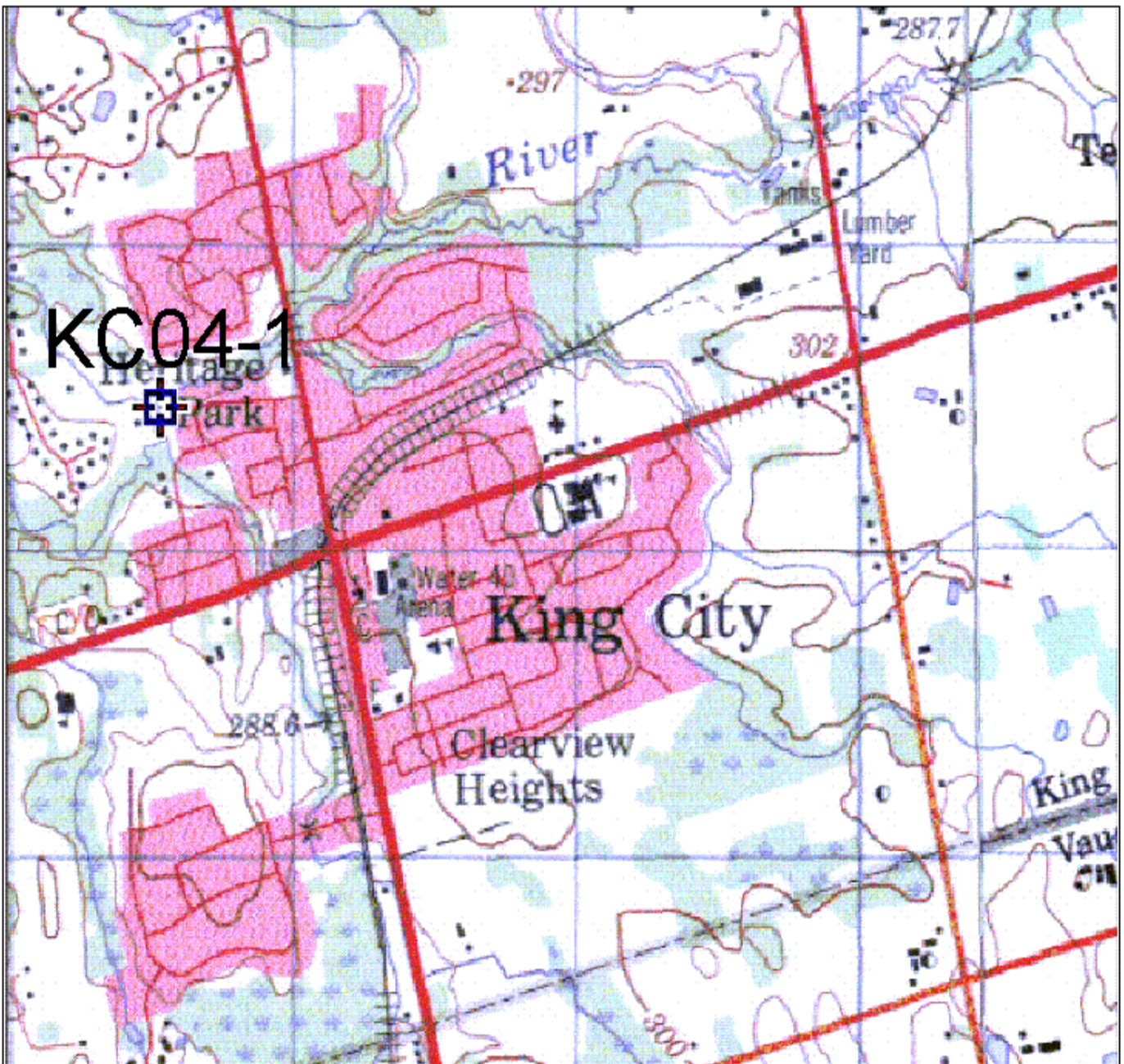
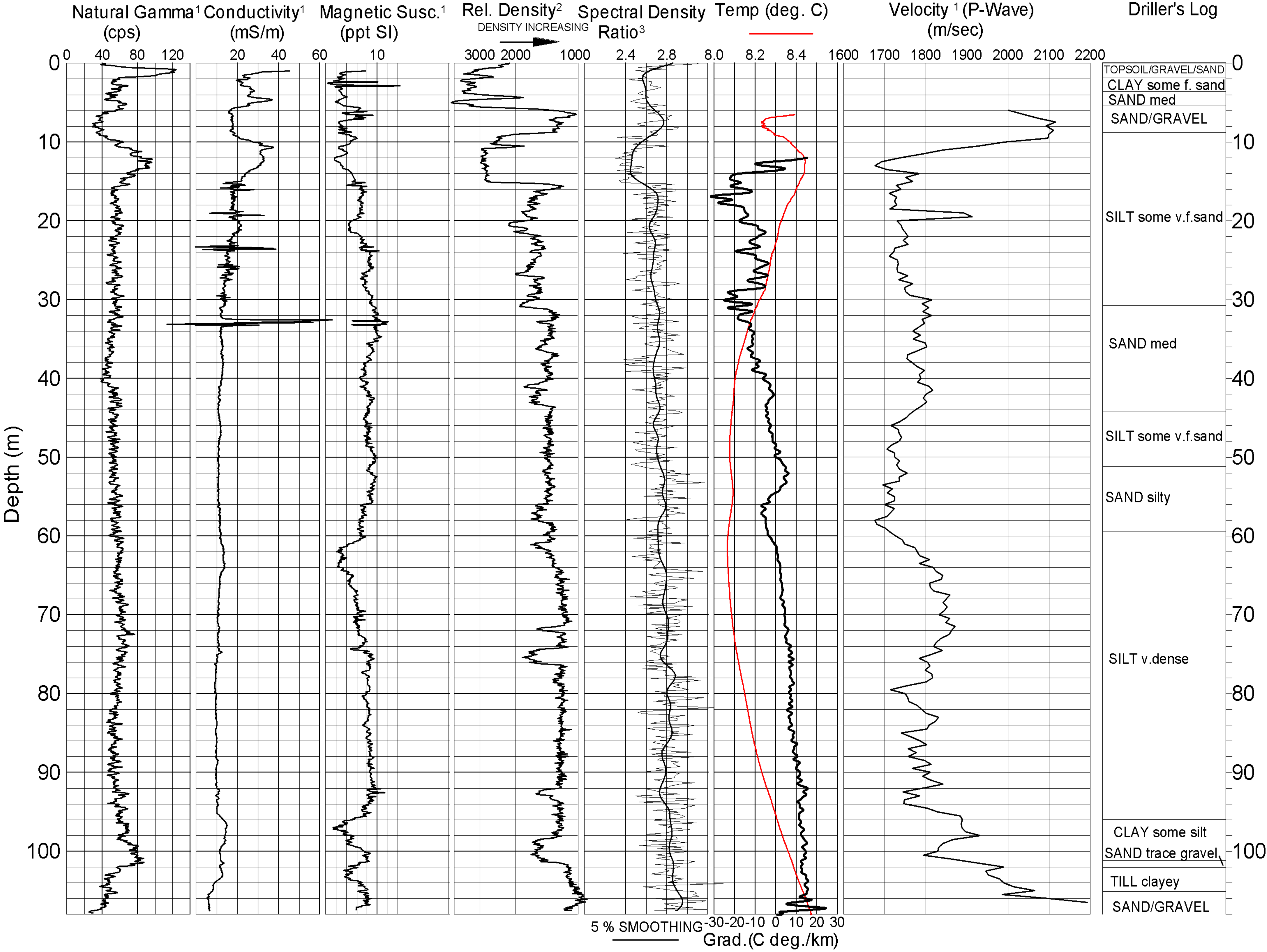


GEOLOGICAL SURVEY OF CANADA

BOREHOLE : KINGCITY04-1



GEOLOGICAL SURVEY
OF CANADA

BOREHOLE: **KC04-1** (Doris Patton Pk)

PROJECT: Assessment of Regional
Aquifers

MAP SHEET **LOCATION:** Z 17 0617528 E
WGS84 4865460 N

DEPTH: 108 m

CASING: PLASTIC 3"

WATER TABLE: 6.02 M

OPER: R. GOOD

LOGGING DATE: 12 /05 /04

FILE: KC04-1ML GRF

NOTES: 1. 3" PVC CASING
2. COUNT (200-1000 keV)
3. (200-1000)/(50-150)keV