

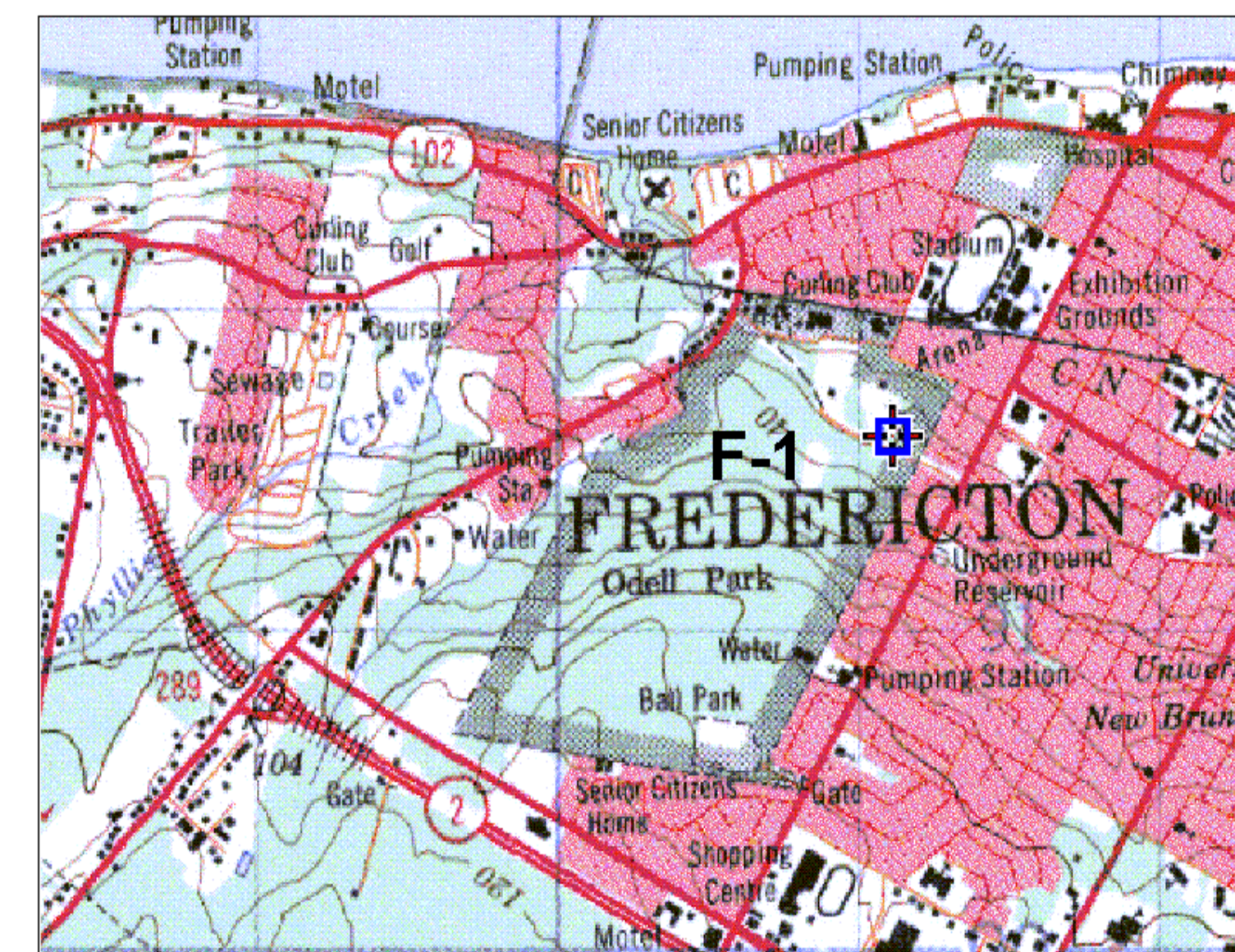
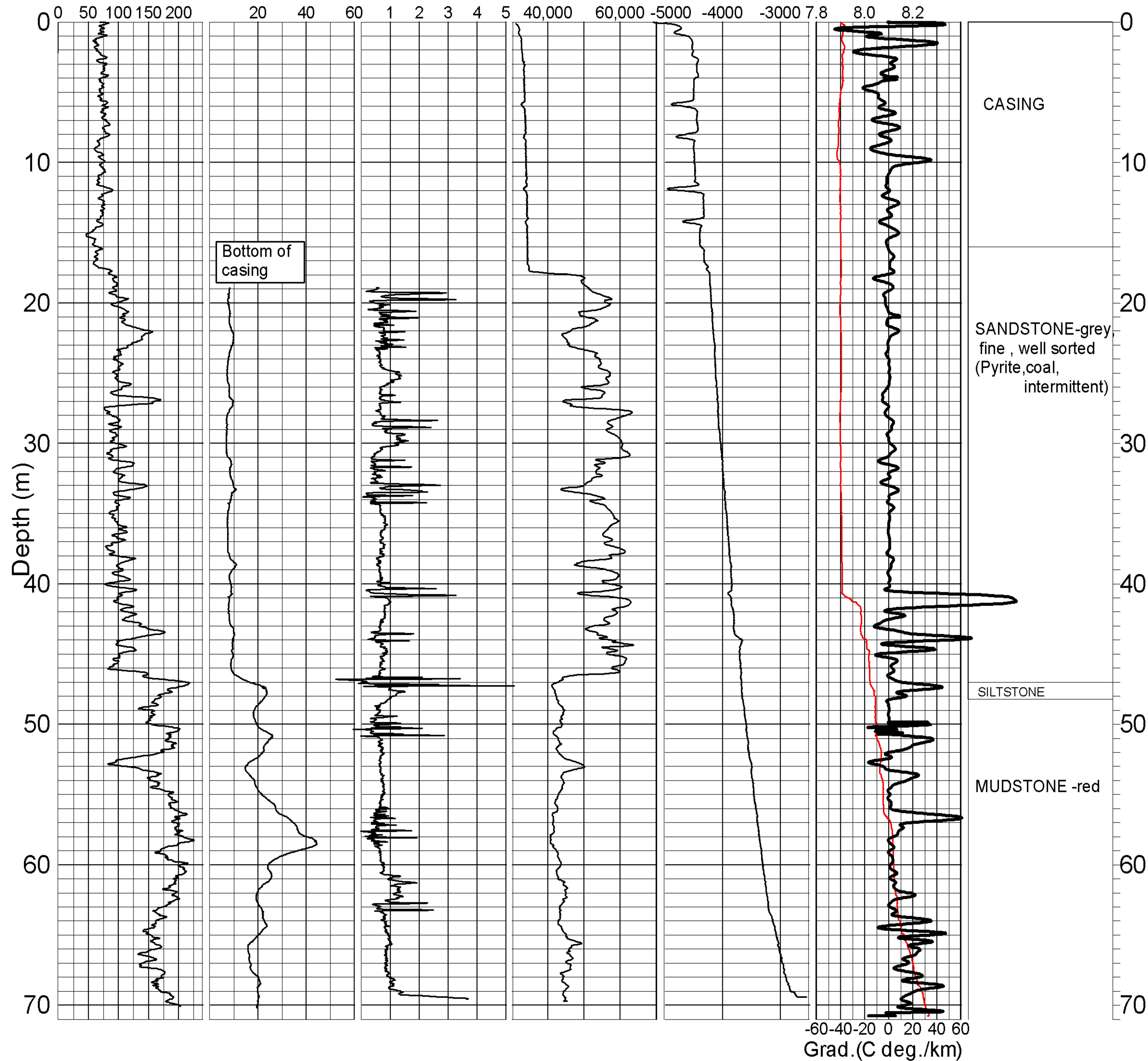


# GEOLOGICAL SURVEY OF CANADA

## BOREHOLE : F-1(Fractured Rx)

Natural Gamma Conductivity<sub>1</sub> Magnetic Susc.<sub>1</sub> Single Pt. Res Self Potential Temp (deg. C) Driller's Log

(cps) (mS/m) (ppt SI)



GEOLOGICAL SURVEY OF CANADA

**BOREHOLE: F-1**  
(Odell Park near horse barn)

**PROJECT:** Collaborative Survey - GSC & University of New Brunswick

**MAP SHEET** 21G 15 **LOCATION:** Z 19 681160 E  
WGS84 5091849 N

**DEPTH:** 71 m

**CASING:** STEEL Cased TO 16M

**WATER TABLE:** FLOWING

**OPER:** R. GOOD

**LOGGING DATE:** 11 /09 /03

**FILE:** F-1ML.GRF

**NOTES:** 1. STEEL CASING TO 16 M  
2. SINGLE POINT RESISTIVITY (hole to surface pin-5 m)