

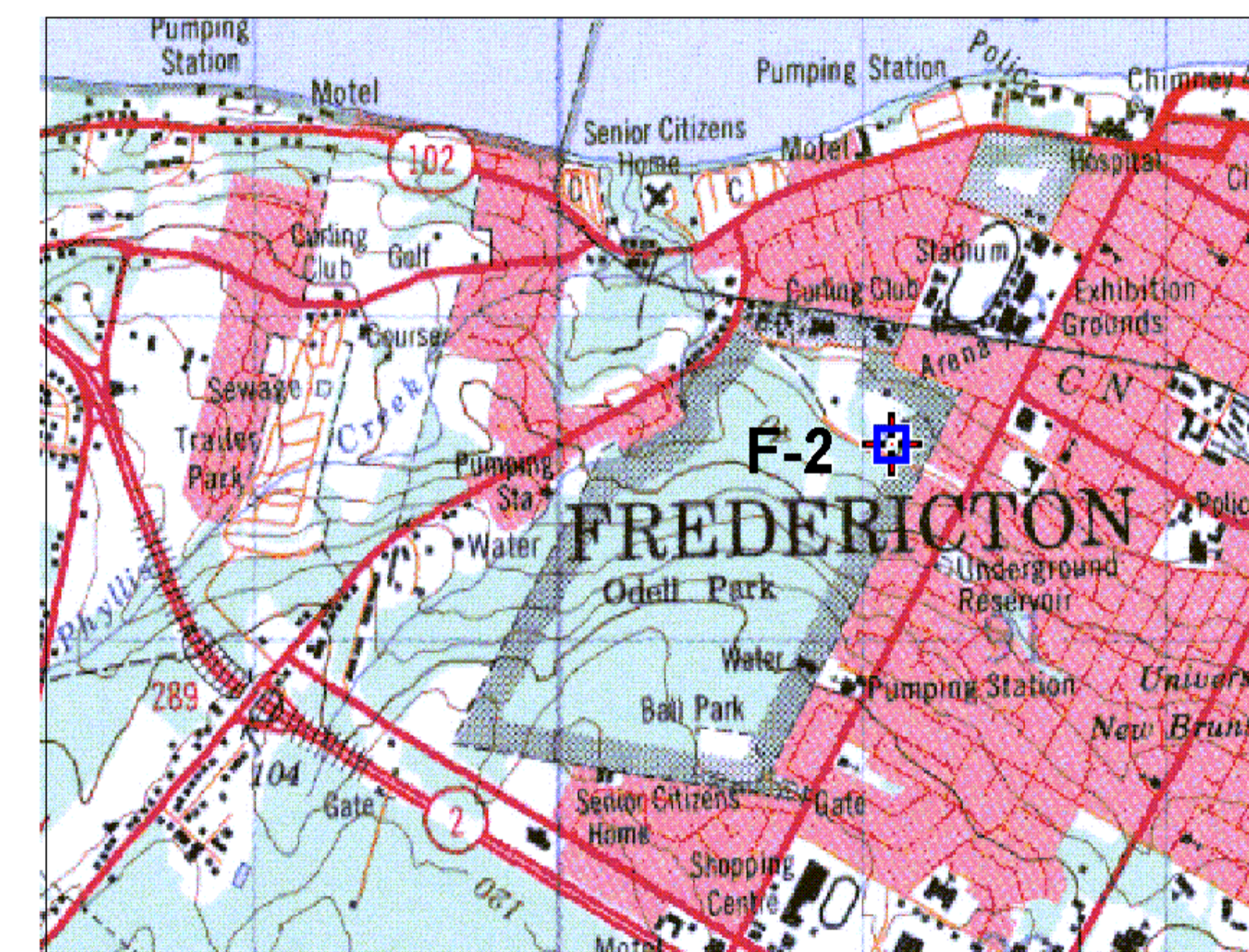
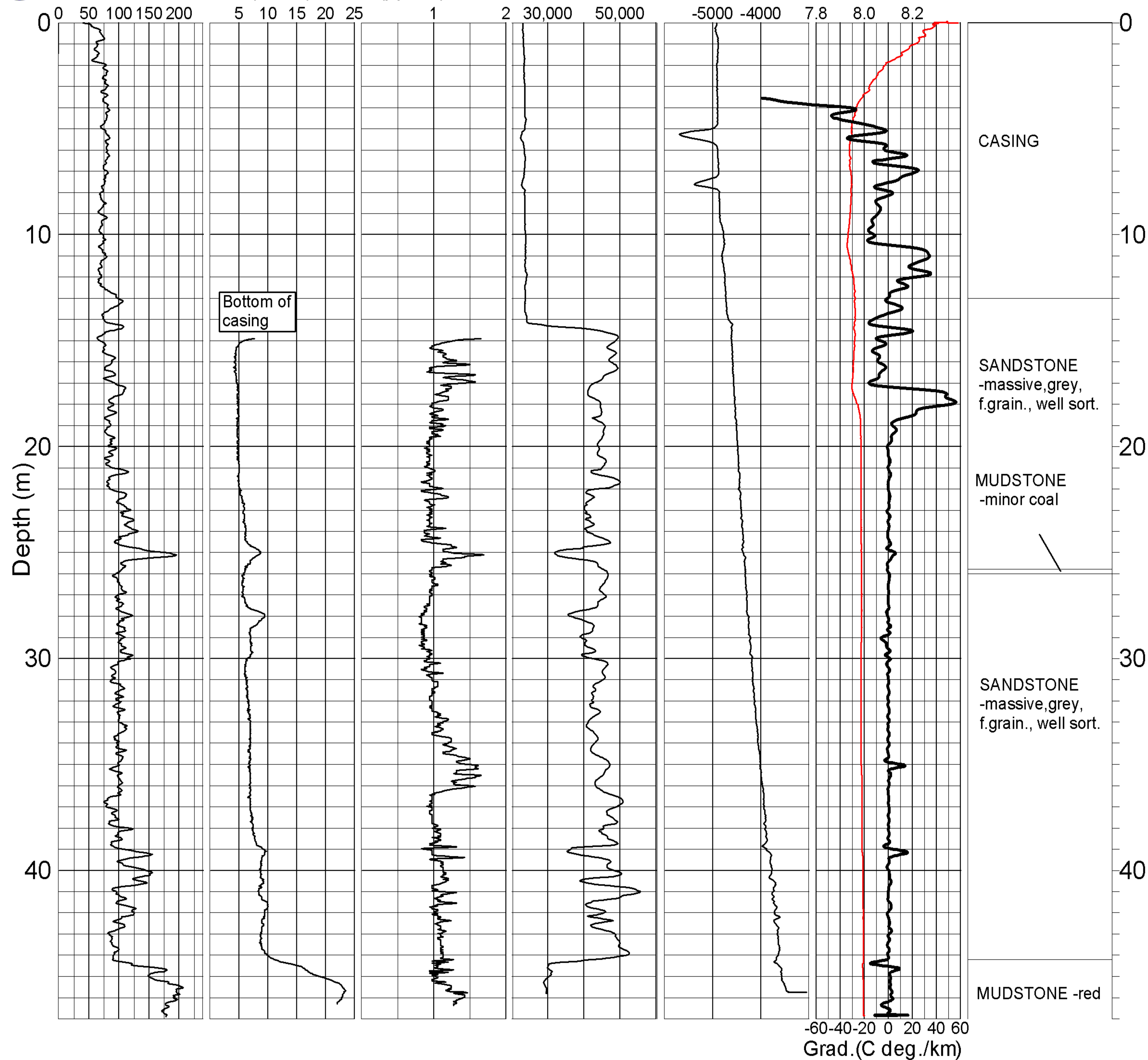


GEOLOGICAL SURVEY OF CANADA

BOREHOLE : F-2(Fractured Rx)

Natural Gamma Conductivity₁ Magnetic Susc.₁ Single Pt. Res Self Potential Temp (deg. C) Driller's Log

(cps) (mS/m) (ppt SI)



GEOLOGICAL SURVEY OF CANADA

BOREHOLE: F-2

(Odell Park near horse barn)

PROJECT: Collaborative Survey - GSC & University of New Brunswick

MAP SHEET 21G 15

LOCATION: Z 19 681144 E
WGS84 5091845 N

DEPTH: 50 m

CASING: STEEL Cased to 13M

WATER TABLE: FLOWING

OPER: R. GOOD

LOGGING DATE: 11 /09 /03

FILE: F-2ML.GRF

NOTES: 1. STEEL CASING TO 13 M
2. SINGLE POINT RESISTIVITY (hole to steel surface pin-15 m)