



GEOLOGICAL SURVEY OF CANADA

BOREHOLE :ST.BENOIT

ZONE 18 5-69-122E
50-47-609N

Natural Gamma Conductivity Magnetic Susc. Rel. Density* Spectral Density Temp (deg. C) General Lithology

(cps)

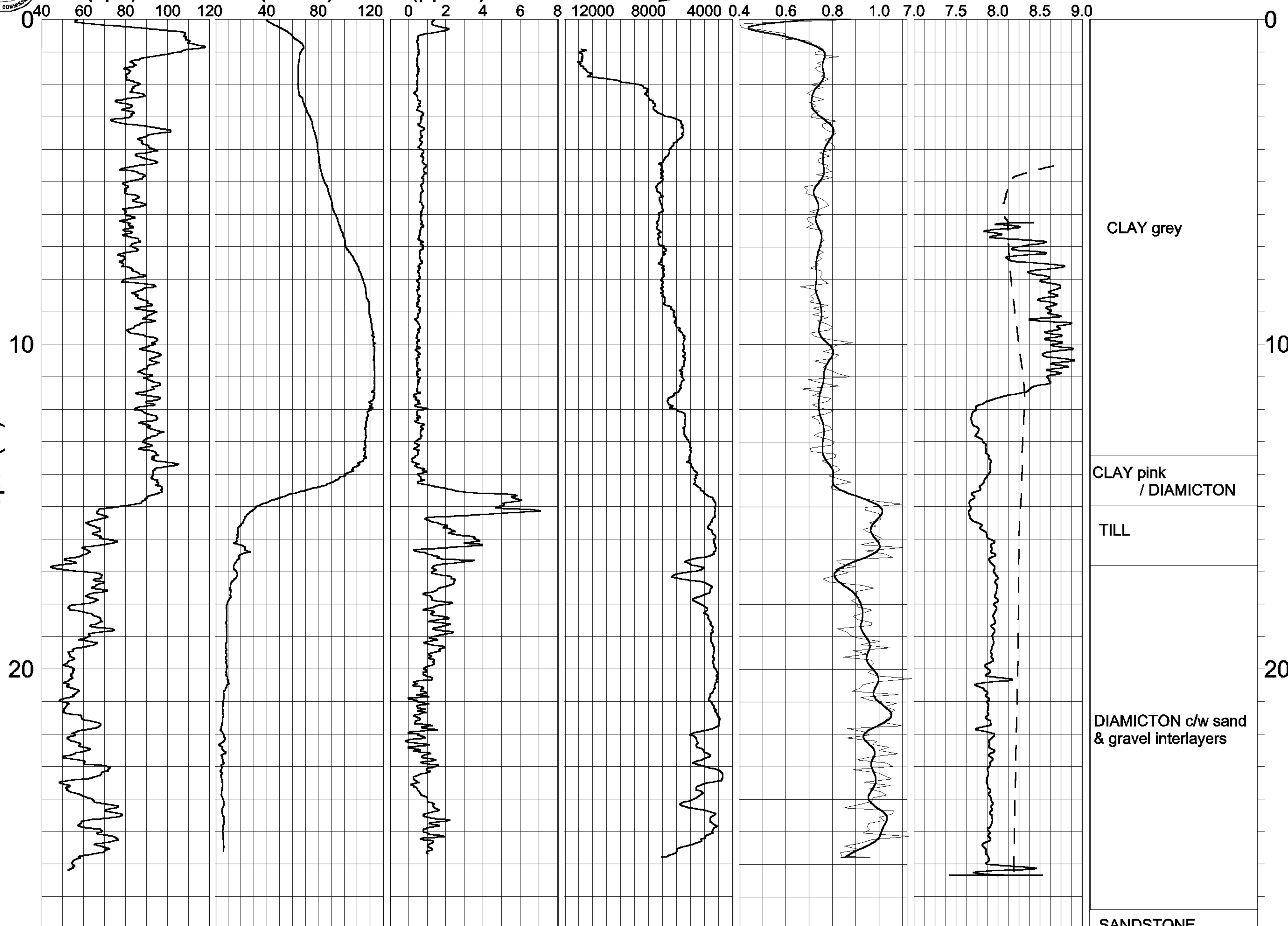
(mS/m)

(ppt SI)

DENSITY INCREASING

Ratio**

Depth (m)



*COUNT(50-800keV)

5% SMOOTHING

-80-60-40-20 0 20 40 60 80
Grad.(C deg./km)

**RATIO = (375-800keV)/(90-140keV)

SANDSTONE

OK00-1M.GRF